

ST Switch

Safety Test Switch

Testing Solutions
for
Electric Power

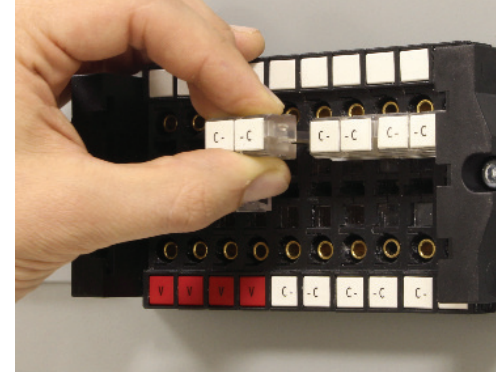
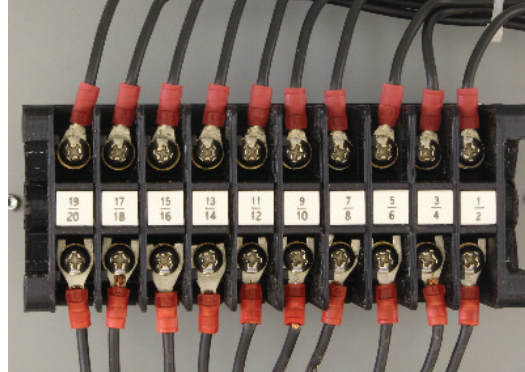


FT SWITCH CUTOUT SIZE

VISIBLE OPEN, YET FINGER-SAFE DESIGN

ACCEPTS SHIELDED BANANA PLUGS

Patent Pending

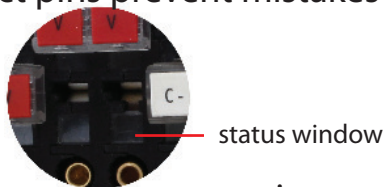


While most parts of the electrical grid are modernizing rapidly, test access points often still date back the days of electromechanical relays. The ST Switch offers a new approach to testing, fitting today's world of advanced micro-processor relays and intelligent devices:

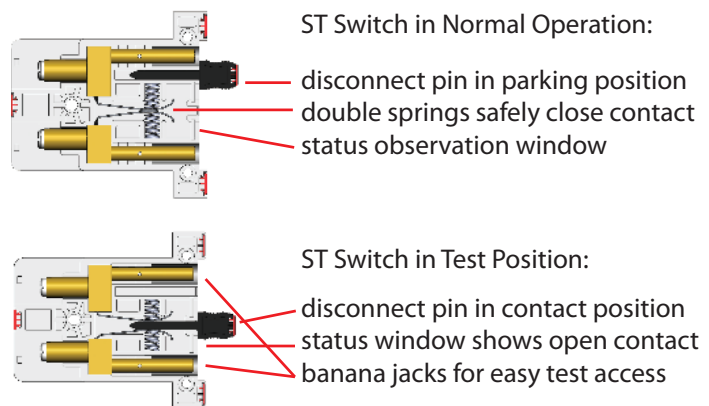
- **INCREASED SAFETY**
- **EASIER OPERATION**
- **IMPROVED TEST EFFICIENCY**

Key Features

- Finger-safe design eliminates risk to touch live voltages
- Automatic make-before-break CT shorting upon CT disconnect pin insertion
- Keyed disconnect pins prevent mistakes
- Visible open via integrated status window
- Anti-arcing design - contact opening direction against the formation of arcs
- Integrated jacks for shielded banana plugs
- Slide-on dust cover with operation instructions and link to dedicated website
- Well legible, customizable labeling
- Fits standard FT switch cutouts



Principle of Operation



Technical Specifications

Current withstand	30 A continuous 500 A for 1 second
Maximum voltage	600 V
Contact resistance	≤ 2 mΩ
Dielectric withstand	3.0 kV RMS for 1 minute between adjacent contact pairs and between any contact pair and other metal parts 3.0 kV RMS for 1 minute between open contacts when test pin is inserted
Voltage impulse	3 positive and 3 negative impulses of 5 kV peak, 1.2/50 μs, 0.5 J between adjacent contact pairs and between all contact pairs and other metal parts
UL94 flammability class	V-0
Enclosure protection	IP50 (with dust cover)

SecuControl ST Switches have been classified as electromagnetically benign and are therefore excluded from the scope of the European Community Directive 2004/108/EC. SecuControl ST Switches meet or exceed all requirements from ANSI / IEEE C37.90-2005



Europe
 Secucontrol Produktions GmbH
 Ascherslebener Str. 3
 06333 Hettstedt, Germany
 Tel.: +49 3573 80 99 048
 E-Mail: info@secucontrol.com

North America
 SecuControl, Inc.
 4721 Eisenhower Avenue
 Alexandria VA 22304, USA
 Tel.: +1 703 838 7677
 E-Mail: mail@secucontrol.com

South America
 SecuBrasil Ltda
 Rod. Jose Carlos Daux, 8600
 88050-001 Florianopolis SC, Brazil
 Tel.: +55 48 3371 1670
 E-Mail: comercial@secubrasil.com